

COLTLITE

PRODUCT DESCRIPTION

Coltlite is a natural louvred ventilator designed to provide both fresh air intake and exhaust, while also allowing the entry of natural daylight. In the event of a fire, it serves as a natural smoke extract ventilator. Coltlite is available in a range of models — including CLT, CLN, CLS, CLS45, CLST, and CLET — to suit various architectural and performance requirements.

APPLICATIONS

Coltlite's energy-efficient design and high-specification build quality make it ideal for use in municipal, commercial, and industrial buildings.

FEATURES AND BENEFITS

- Designed for vertical façade installation with a refined, modern aesthetic for seamless architectural integration.
- CE marked and factory-certified to EN ISO 9001, ensuring compliance with European quality standards.
- Tested and classified to EN 14351-1 for natural ventilation; most variants are certified to EN 12101-2 for smoke ventilation.
- Multifunctional ventilator providing air intake, exhaust, and natural daylight in one solution.
- High aerodynamic, thermal, and acoustic performance with excellent heat resistance.
- Available with additional features, including burglar resistance to EN 1627:2021 Class RC 2/2N (Coltlite CL3) and EPD verification by IBU for Coltlite CL3.

See over for technical details

NATURAL VENTILATION WITH ARCHITECTURAL APPEAL

Coltlite louvred ventilators provide natural ventilation and introduce daylight into commercial buildings, factories, and residential developments. In addition to day-to-day ventilation, they also function as smoke and heat exhaust ventilators (SHEV), providing critical smoke extraction and fire ventilation to keep escape and rescue routes clear in the event of an emergency.

Coltlite units are designed for vertical installation into external walls — whether glass or solid façades — and can be integrated into steel or timber constructions. They feature thermally broken or non-thermally broken aluminium profiles, and are available with single or double glazing. Alternative infill panels are also available, depending on the model selected.

Colt offers a wide range of Coltlite variants to suit different performance and aesthetic requirements. All models share the same fundamental design principles, combining durability, visual appeal, and reliable ventilation performance. Available versions include CLT, CLN, CLS, CLS45, CLST, CLET, and CL3 — each optimised for specific applications.

- **Coltlite CLT:** Thermally broken louvred ventilator with double glazing, designed for applications with high thermal and acoustic performance requirements.
- **Coltlite CLN:** Double-glazed ventilator with a standard frame (without thermal break), ideal for projects where insulation is less critical, but airtightness and durability are essential.
- **Coltlite CLS:** Single-glazed ventilator with a standard frame, offering excellent aerodynamic performance for applications where thermal insulation is not required.
- **Coltlite CLS45:** Frameless single-glazed ventilator with a standard frame and 45° mitred glass edges, designed to deliver a flush, seamless glass façade appearance.
- **Coltlite CLST:** Thermally broken, double-glazed ventilator with a flat external glass appearance, developed for architectural projects demanding both performance and discreet aesthetics.
- **Coltlite CLET:** Thermally broken ventilator with aluminium louvres, optionally insulated with PUR/PIR or mineral wool, providing robust performance for industrial applications.
- **Coltlite CL3:** Thermally broken, double-glazed ventilator combining high performance with added security features, including burglar resistance to EN 1627:2021 RC 2/2N and EPD verification for sustainable building projects.

How Coltlite louvred ventilators work

The louvres are centrally pivoted and operated by manual, electric, or pneumatic drives. A concealed push rod mechanism ensures that all louvres open and close in perfect synchronisation. Depending on the drive type, the louvres can open up to 90°. For versions with electric or pneumatic drives, a risk assessment in accordance with the EU Machinery Directive 2006/42/EC must be carried out during the design and commissioning phases.

Colt manufactures the main frame and louvre components from high-grade EN AW-6063-T6 aluminium alloy, ensuring durability and strength. Where required, Colt will assess the technical demands of the application against the verified performance of Coltlite ventilators. Products are tested and certified to EN 14351-1 for windows and doors, and most versions are also certified to EN 12101-2 for natural smoke and heat exhaust ventilation. All manufacturing processes are certified to EN ISO 9001:2015.



COLTLITE VERSIONS

Colt manufactures Coltlite ventilators in **CLT, CLN, CLS, CLS45, CLST** and **CLET** versions. All the louvred ventilator versions have the following common features:

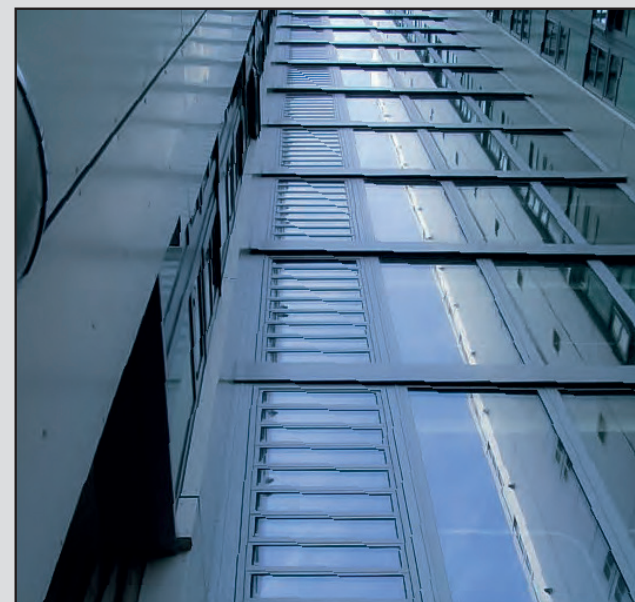
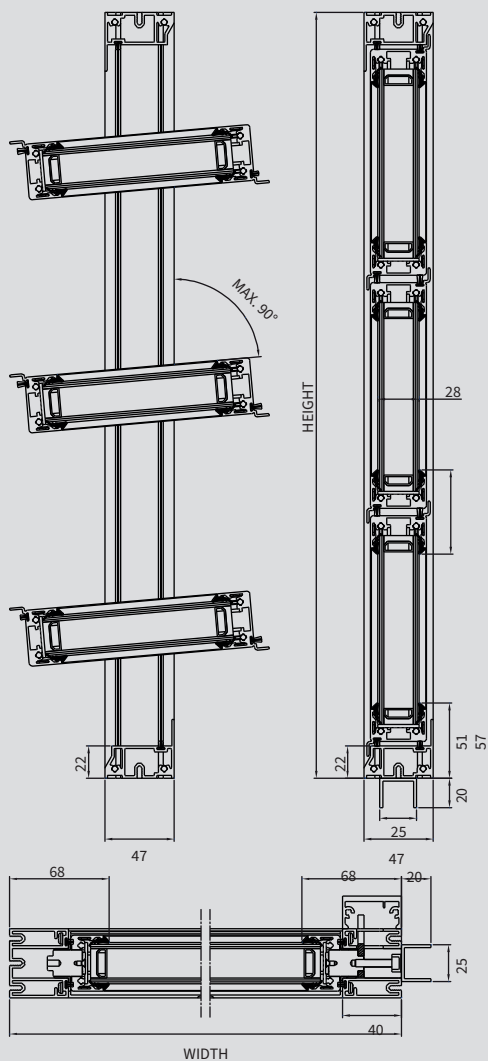
- *Frame depth 47 mm*
- *Visible frame 40 mm*
- *Aluminium profiles in EN AW-6063-T6 grade alloy*
- *Surface finishes anodised according to E6 EV I or powder-coated in RAL colours*
- *All fittings are hidden.*
- *A low-maintenance actuator moves the louvres using a hidden mechanism*
- *All louvred ventilators, except CLS45, are certified as EN 12101-2 smoke ventilators.*

NON-THERMALLY BROKEN COLTLITE LOUVRED VENTILATORS

TYPE CLN

Coltlite CLN is non-thermally broken. The double glazed louvres, with 28mm thick standard glass, are set all-round into aluminium profiles.

The louvred ventilator providing high airtightness and meeting exacting requirements.



TECHNICAL DATA	COLTLITE CLN
MATERIAL	Non-thermally broken louvred ventilator made of aluminium profiles. Double glazed louvres with 28mm thick standard glass.
WIDTH	300mm - 2000mm
HEIGHT	250mm - arbitrary
HEIGHT OF LOUVRES	170mm - 370mm
OPENING ANGLE	Max. 90° (this depends on the drive selected)
DEPTH OF FRAME	47 mm
LOUVRE INFILL	Insulating glass, composite panels
CONTROLS	Manual, electric, pneumatic



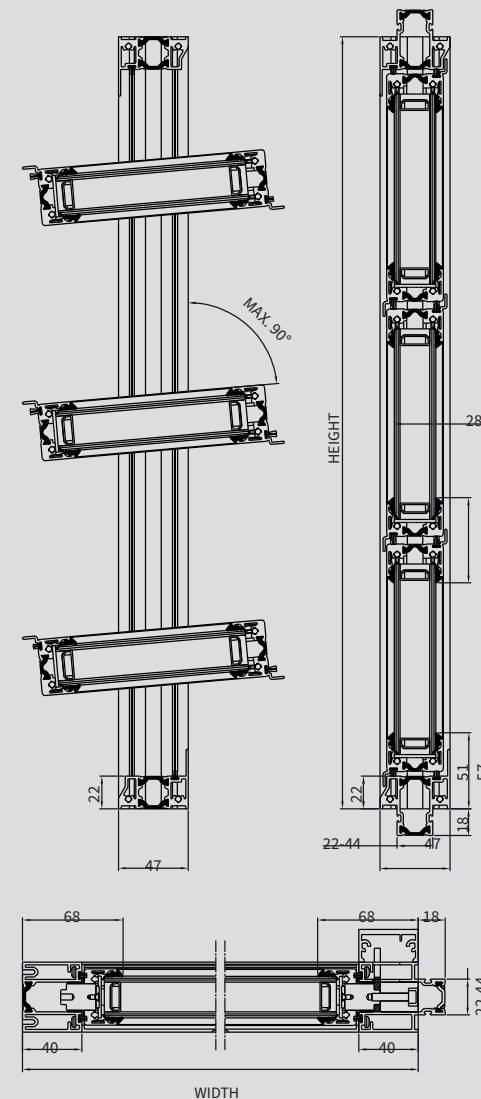
THERMALLY BROKEN COLTLITE LOUVRED VENTILATORS

TYPE CLT

Coltlite CLT is a thermally broken louvred ventilator. The double glazed louvres, with 28mm thick standard glass, are set all-round into insulated aluminium profiles.

Designed for applications requiring high acoustic and thermal performance.

TECHNICAL DATA	COLTLITE CLT
MATERIAL	Thermally broken louvred ventilator made from thermally broken aluminium profiles. Double glazed louvres with 28mm thick standard glass.
WIDTH	300mm - 2000mm
HEIGHT	250mm - arbitrary
HEIGHT OF LOUVRES	170mm - 370mm
OPENING ANGLE	Max. 90° (this depends on the drive selected)
DEPTH OF FRAME	47 mm
LOUVRE INFILL	Insulating glass, composite panels
CONTROLS	Manual, electric, pneumatic

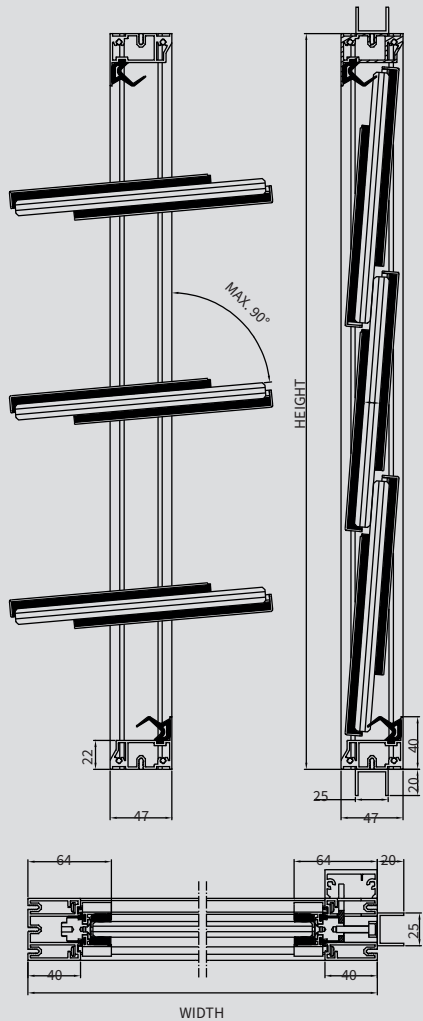


SINGLE GLAZED COLTLITE VENTILATOR

Type CLS

Coltlite CLS is non-thermally broken. The louvres comprise 8mm, 10mm or 12mm thick single glazing, which is fixed on the sides into non-insulated aluminium profiles. All visible glass edges are polished. The louvre overlaps provide a louvred glazed appearance.

For the highest aerodynamic performance where thermal insulation is not a key requirement.



TECHNICAL DATA	COLTLITE CLS
MATERIAL	Non-thermally broken louvred ventilator. Sides of the louvres fixed into non-insulated aluminium profiles.
WIDTH	300 mm - 1800 mm
HEIGHT	250 mm - arbitrary
HEIGHT OF LOUVRES	200 mm - 390 mm
OPENING ANGLE	Max. 90° (this depends on the drive selected)
DEPTH OF FRAME	47 mm
LOUVRE INFILL	Single glass (8, 10 or 12mm thick), polished edges
CONTROLS	Manual, electric, pneumatic

COLTLITE LOUVRED VENTILATOR WITH SINGLE GLAZING WITH A 45° MITRE CUT

TYPE CLS45

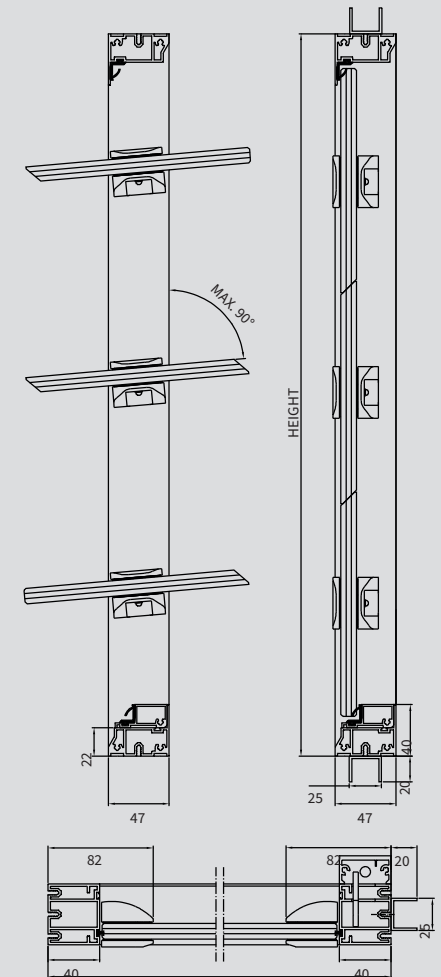
The Coltlite CLS45 is non-thermally broken louvred ventilator.

The glass louvres close on their long sides with a 45° mitred edge, so that they are flush with each other when closed and the entire façade looks like a single glass surface. The silver-coloured aluminium point brackets hold the glass, which makes it unnecessary to surround the individual louvres with frame profiles.

Suitable for projects requiring an aesthetic façade appearance.



TECHNICAL DATA	COLTLITE CLS45
MATERIAL	Non-thermally broken louvred ventilator. Frameless single glazing with 8, 10 or 12mm thick standard glass.
WIDTH	300mm - 1600mm
HEIGHT	250 mm - arbitrary
HEIGHT OF LOUVRES	180 mm - 367 mm
OPENING ANGLE	Max. 90° (this depends on the drive selected)
DEPTH OF FRAME	47 mm
LOUVRE INFILL	Single glass (8, 10 or 12mm thick), polished edges
CONTROLS	Manual or electric



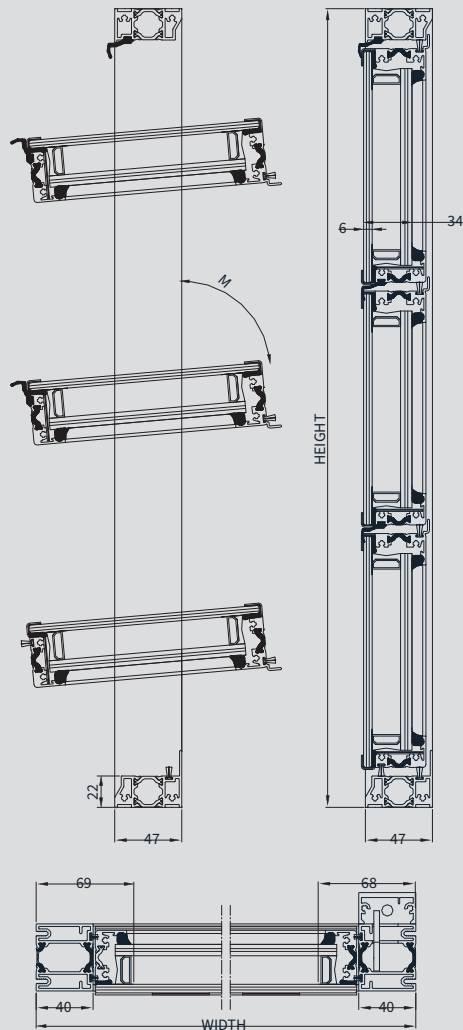
WIDTH

THERMALLY BROKEN COLTLITE LOUVRED VENTILATORS

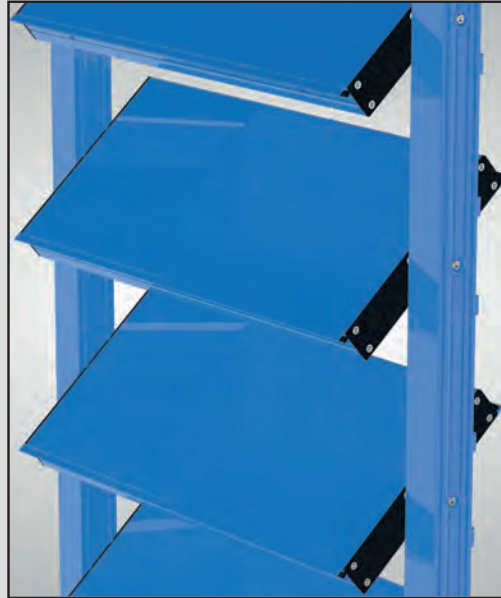
TYPE CLST

Coltlite CLST louvred ventilators have an all-glass appearance from the outside, and are suitable for natural day-to-day ventilation. The frame has a depth of 47 mm with concealed fittings. The external louvres are flush with-out visible louvre profiles, suitable for vertical installation.

Combines functional performance with architectural design.



TECHNICAL DATA	COLTLITE CLST
MATERIAL	Thermally broken louvred ventilator. A flat glazed appearance when viewed from the outside.
WIDTH	300 mm - 1600 mm
HEIGHT	250 mm - arbitrary
HEIGHT OF LOUVRES	210 mm - 359 mm
OPENING ANGLE	Max. 90° (this depends on the drive selected)
DEPTH OF FRAME	47 mm
LOUVRE INFILL	Double insulated glazing with step and polished edges
CONTROLS	Manual or electric

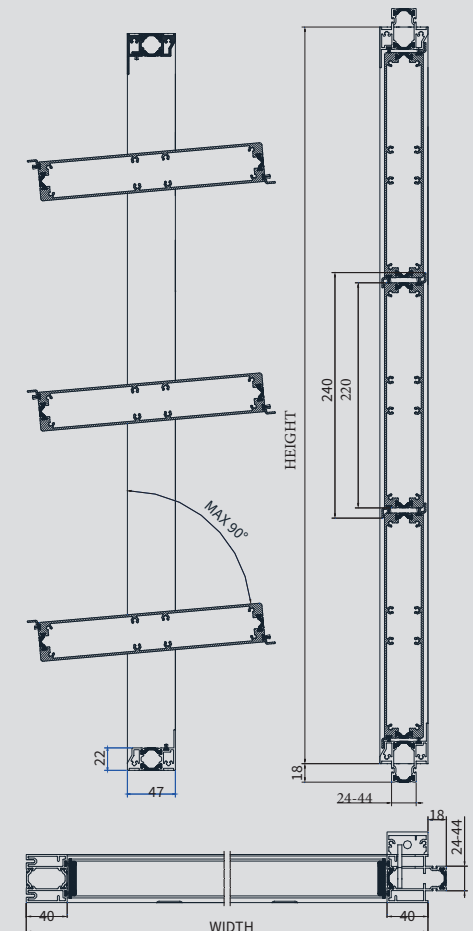


TYPE CLET

The Coltlite CLET louvred ventilator consisting of thermally-broken aluminium profiles, anodised or powder-coated in the RAL colour of your choice. 40mm thick visible width of the frames, operation of the louvres via a maintenance-free drive with concealed mechanisms and concealed movement. Louvres consist of flush thermally separated aluminium profiles with a U-value of up to 1.7 W/m²K.

The virtually flush-finish louvred ventilator for industry.

TECHNICAL DATA	COLTLITE CLET
MATERIAL	Thermally broken louvred ventilator.
WIDTH	300mm - 2000mm
HEIGHT	270 mm - arbitrary
HEIGHT OF LOUVRES	240 mm
OPENING ANGLE	Max. 90° (this depends on the drive selected)
DEPTH OF FRAME	47 mm
LOUVRE INFILL	Aluminium, optionally with PUR/PIR or mineral wool infill
CONTROLS	Manual, electric, pneumatic



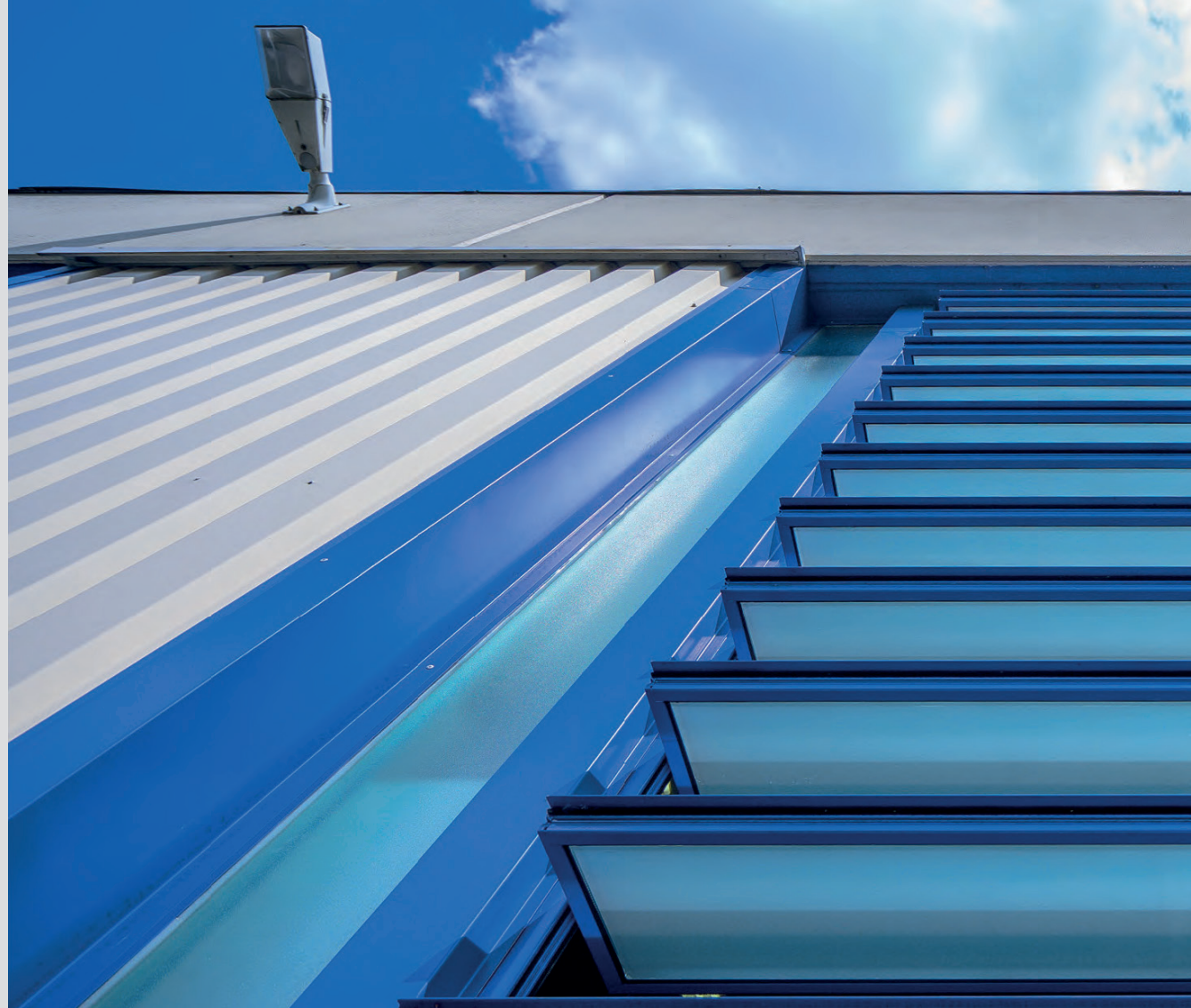
ACTUATOR TYPES

A Coltlite ventilator can be manually adjusted to any position between 0° and 85° using a hand lever or crank handle. This allows high aerodynamic coefficients to be achieved. In addition to a pneumatic drive, over 20 different electric drives are available. Electronically controlled drives are available to minimise the risk of body parts being pinched.

Colt is a leader in this area with its “slow” drive variants, which are fast enough in the event of a fire, but slow enough to largely prevent trapping of body parts.

In addition to various spring return motors, which open the units in the event of fire without any power supply, a specially certified drive can also be used for outdoor applications.

Most actuator types have housings with a powder coating colour to match the colour of the frames.



LOUVRE INFILL PANELS

As standard, there are single or double glazed louvres available. Glass thicknesses between 4 and 8mm are available for double glazed louvres with a total thickness of 28mm or 34mm (Coltlite CLST only) and glass thicknesses of 8mm, 10mm and 12mm for the Coltlite CLS and CLS45 single glazed versions.

Optionally, insulated aluminium louvres or polycarbonate multi-wall sheets can also be used.







PAINT FINISHES

All frame profiles and aluminium louvres can be anodised to E6 EV1. This finish is light coloured matt silver. The profiles themselves (frames and louvres) can be polyester powder finished to a standard RAL colour.

Where profiles are thermally broken, two colours may be provided. This means that the inner and outer profiles are different colours.

Metallic and special colours are available on request.

PRODUCT DATASHEET

		LOUVRE FRAMES	VENT WIDTH ¹	VENT HEIGHT ²	LOUVRE HEIGHT ³	OPENING ANGLE ⁴	DEPTH OF FRAME	LOUVRE INFILL TYPES	GLASS OR LOUVRE THICKNESSES	GLASS TYPES	ALTERNATIVE INFILL TYPES	CONTROLS	AIR PERMEABILITY (EN 12207)	RESISTANCE TO RAIN (EN 12208)	RESISTANCE TO WIND (EN 12210)	SHEV (EN12101-2)	U VALUE (EN ISO 10077-1)	C _p VALUE	SOUND INSULATION
	COLTLITE CLN	AL profiles, not thermally broken	300mm - 2000mm	250mm - arbitrary	170mm - 370mm	Max. 90°	47mm	Insulated glazing composite panels	28mm	Float glass, toughened glass, partially heat-strengthened glass, laminated safety glass	Composite panels	Manual, electric, pneumatic	Tested to EN 1026 and classified to EN 14351-1 Windows and doors product standard, performance characteristics)	Class 5A	Classification value depends on the unit size, tested to EN 12211 in combination with air permeability tests	A tested and certified product	up to max. 1.9 W/m ² /K	Up to max. 0.58	Not tested
	COLTLITE CLT	AL profiles, thermally broken	300mm - 2000mm	250mm - arbitrary	170mm - 370mm	Max. 90°	47mm	Insulated glazing composite panels	28mm	Float glass, toughened glass, partially heat-strengthened glass, laminated safety glass	Composite panels	Manual, electric, pneumatic		Class 4A		A tested and certified product	up to max. 1.5 W/m ² /K	Up to max. 0.58	up to max. 41 dB
	COLTLITE CLS	Side glass holder profiles	300mm - 1800mm	250mm - arbitrary	200mm - 390mm	Max. 90°	47mm	Single glass edges polished	8 / 10 / 12mm	Float glass, toughened glass, partially heat-strengthened glass, laminated safety glass	-	Manual, electric, pneumatic		Class 2A		A tested and certified product	up to max. 5.8 W/m ² /K	up to max. 0.65	up to max. 27 dB
	COLTLITE CLS45	Frameless	300mm - 1600mm	250mm - arbitrary	180mm - 367mm	Max. 90°	47mm	Single glass edges polished	8 / 10 / 12mm	single toughened safety glass	-	Manual or electric		Class 2A		Not tested	up to max. 5.8 W/m ² /K	Not tested	Not tested
	COLTLITE CLST	AL profiles, thermally broken	300mm - 1600mm	250mm - arbitrary	210mm - 359mm	Max. 90°	47mm	Insulated double stepped glass	34mm	Outer - 6mm single toughened safety glass. Inner - float, toughened safety glass, laminated safety glass	-	Manual or electric		Class 3A		A tested and certified product	up to max. 1.8 W/m ² /K	up to max. 0.58	Not tested
	COLTLITE CLET	AL profile, thermally broken	300mm - 2000mm	250mm - arbitrary	240mm	Max. 90°	47mm	optional PUR/PIR or mineral wool	38mm	-	-	Manual, electric, pneumatic		Class 4A		A tested and certified product	up to max. 1.9 W/m ² /K	Up to max. 0.58	Not tested

¹) Outer frame dimensions. For throat dimensions subtract 80mm.

²) Ventilators over a certain width and height are separated for ease of transportation and handling.

³) Maximum louvre weight 20 kg. Aspect ratio of louvre height to louvre length must be less than 1:10.

⁴) This value depends on the width of the unit, the wind strength and louvre height.

The value shown is based on the characteristics of a specific typical sample. These data are indicative only. The ventilator should be designed to resist the design wind loads.

