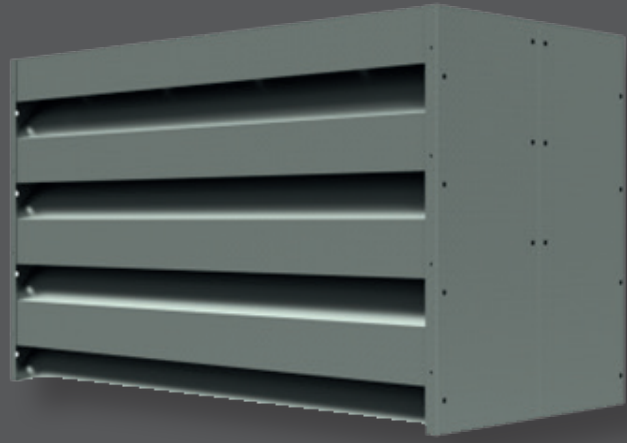




PRODUCT DATASHEET

COLT ACOUSTIC LOUVRE MODULES (CALM)

CALM S18-600-V

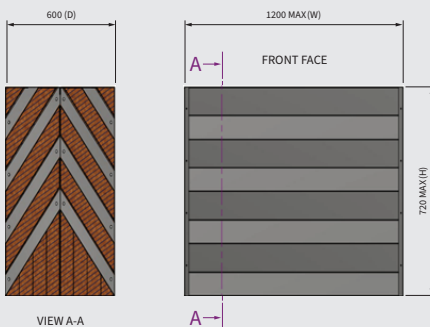


Description of the product

The Colt CALM S18-600-V is the highest performing acoustic louvre module in the CALM range, designed for applications requiring maximum noise attenuation while still maintaining airflow. With a 600mm thick chevron blade profile — formed by combining two S18-300 modules back-to-back — it offers superior acoustic performance, particularly at mid to high frequencies. This makes the S18-600-V ideal for the most demanding industrial and commercial noise control applications, such as large plant rooms, energy centres, cooling towers, substations, or noise-sensitive facilities adjacent to occupied areas.

Tested to BS EN ISO 10140-2:2021, the S18-600-V achieves a R_w (C, Ctr) rating of 31 (-2, -8), while retaining aerodynamic efficiency with a C_v of 0.142. The chevron blade design delivers a solid metal front and rear appearance, providing both an effective sound barrier and a visually enclosed façade.

Like all CALM modules, the S18-600-V benefits from Colt's modular assembly system, ensuring design flexibility, safe handling, and easy installation. Built to withstand harsh environments, the unit is manufactured from galvanised steel with a wide range of finish options to suit diverse applications.



Materials Used in Manufacture

- Galvanised steel sheet (panel construction)
- Galvanised expanded mesh (rear face)
- Water-repellent and non-hygroscopic semi-rigid acoustic infill (to EN 13501-1)
- Polyester powder coating available to any RAL colour (optional)
- Marine-grade materials and coatings available for high corrosion environments (on request)

Ancillaries Information

- **Vermin & Insect Screens:** Optional rear-mounted vermin screens are available in three configurations: bird guard, bird guard with insect mesh, or fly guard. Each is riveted to the back face of the module. (Note: the use of any screen option requires applying a C_v correction factor of 0.95.)
- **Integration with COLT Universal Louvre (UL):** Fully compatible with the UL system, offering additional weather protection and a wide range of aesthetic options.
- **Integration with Ventilators:** COLT ventilators can be installed behind the CALM modules to provide active airflow control where required.
- **Panel Joining Kits:** Enable the construction of larger assemblies without excessive support structures, simplifying installation and reducing costs.

Product Features

600mm thick chevron blade profile delivering maximum acoustic attenuation within the CALM range

Solid metal appearance to both front and rear faces, ideal for architectural screening and enclosure

Certified acoustic performance to BS EN ISO 10140-2:2021

Constructed by combining two S18-300 units back-to-back for enhanced acoustic performance

Modular system allows virtually unlimited wall or run dimensions

Simple two-person installation with pre-punched fixing points and joining kits for large spans

Fully compatible with COLT Universal Louvre (UL) systems for integrated weather protection and architectural uniformity

DATASHEET

COLT ACOUSTIC LOUVRE MODULES (CALM)

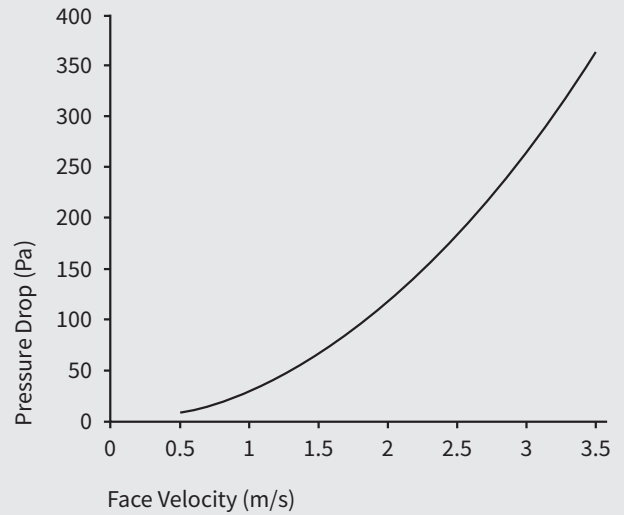
CALM S18-600-V

PERFORMANCE

Acoustic Performance

OCTAVE BAND FREQUENCY (Hz)	SOUND REDUCTION INDEX (dB)
125	11.1
250	17.2
500	30.6
1000	49.5
2000	52.3
4000	42.4

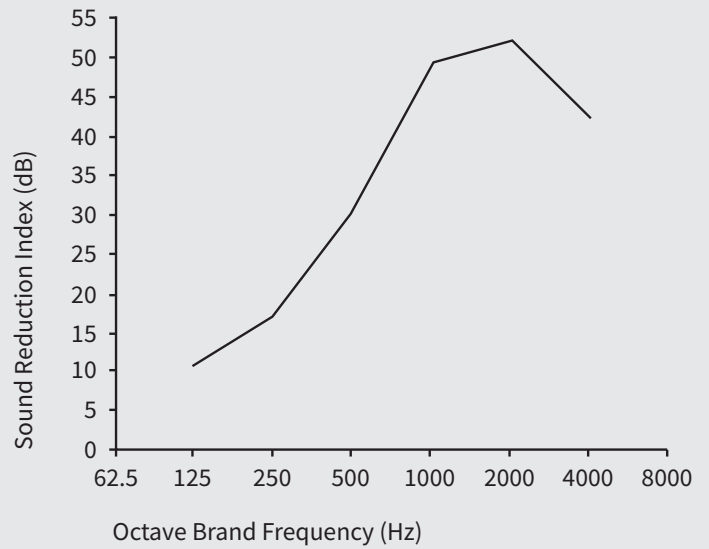
Rw (C, Ctr): 31(-2, -8)



Aerodynamic Performance

FACE VELOCITY (m/s)	PRESSURE DROP (Pa)
0.0	0
0.5	7
1.0	30
1.5	67
2.0	119
2.5	186
3.0	268
3.5	365

Cv: 0.142 (K=49.59)



Colt International Ltd, Colt House, Ridgeway Office Park, Bedford Road, Petersfield GU32 3QF
Telephone: 02392 491210 | E-Mail: louvre@uk.coltgroup.com | Web: <https://www.colt.info/gb/en>

V1.2 Sept 2025

We take every care to ensure the information in this document is accurate at the time of publication. However, specifications may change without notice due to product development, manufacturing variations, or environmental conditions. All images are for illustrative purposes only and should not be considered binding. The information provided is given in good faith and applies to the uses described. It is the responsibility of the user to verify that the product is suitable for the intended application and complies with all relevant regulations and requirements. For advice on applications or conditions of use not specifically covered here, please contact our technical team. To ensure you are viewing the most up-to-date product information, please scan the QR code.

