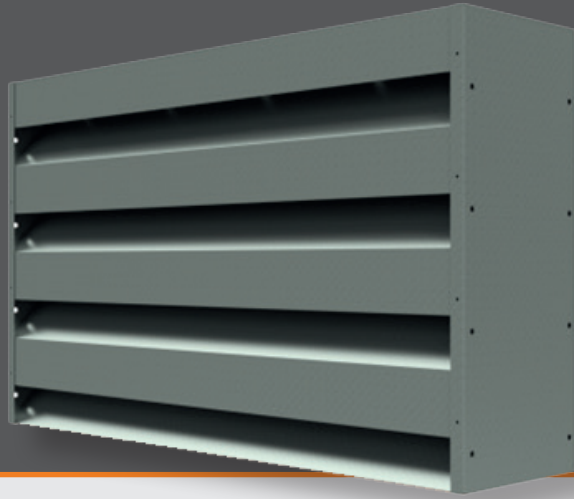




PRODUCT DATASHEET

COLT ACOUSTIC LOUVRE MODULES (CALM)

CALM S18-300-V

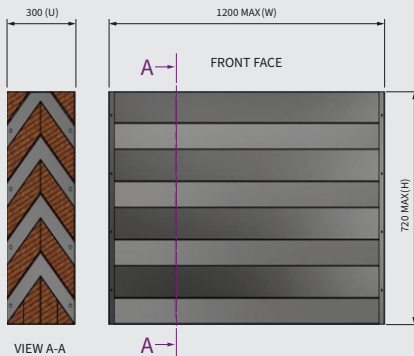


Description of the product

The Colt CALM S18-300-V offers an advanced combination of high-frequency noise attenuation and effective ventilation, utilising a 300mm thick chevron blade profile. This design delivers excellent acoustic performance — particularly at mid to high frequencies — while maintaining airflow, making it highly suited for environments where both noise control and ventilation are critical. Applications include plant rooms, cooling towers, substations, and sensitive industrial settings.

With certified acoustic performance to BS EN ISO 10140-2:2021, the S18-300-V achieves an R_w (C, Ctr) rating of 23 (-2, -5), while maintaining aerodynamic efficiency with a C_v of 0.144. The chevron blade profile provides a solid metal appearance on both front and rear faces, making it ideal where visual continuity or screening is required.

The S18-300-V features Colt's proven modular system, enabling flexible design, easy handling, and seamless integration with other Colt façade or ventilation solutions. Built from galvanised steel with optional coatings, the unit is engineered for long service life even in challenging environments.



Materials Used in Manufacture

- Galvanised steel sheet (panel construction)
- Galvanised expanded mesh (rear face)
- Water-repellent and non-hygroscopic semi-rigid acoustic infill (to EN 13501-1)
- Polyester powder coating available to any RAL colour (optional)
- Marine-grade materials and coatings available for high corrosion environments (on request)

Ancillaries Information

- **Vermin & Insect Screens:** Optional rear-mounted vermin screens are available in three configurations: bird guard, bird guard with insect mesh, or fly guard. Each is riveted to the back face of the module. (Note: the use of any screen option requires applying a C_v correction factor of 0.95.)
- **Integration with COLT Universal Louvre (UL):** Fully compatible with the UL system, offering additional weather protection and a wide range of aesthetic options.
- **Integration with Ventilators:** COLT ventilators can be installed behind the CALM modules to provide active airflow control where required.
- **Panel Joining Kits:** Enable the construction of larger assemblies without excessive support structures, simplifying installation and reducing costs.

Product Features

300mm thick chevron blade profile providing enhanced mid and high frequency sound attenuation

Solid metal appearance to both front and rear faces, suitable for architectural screening

Certified acoustic performance to BS EN ISO 10140-2:2021 with R_w (C, Ctr) = 23 (-2, -5)

Modular system allows walls or runs to accommodate virtually any width or height

Easy two-person installation with pre-punched fixing points for safe on-site assembly

Panel joining kits allow longer spans with minimal intermediate supports

Fully compatible with COLT Universal Louvre (UL) systems for integrated weather protection and architectural consistency

DATASHEET

COLT ACOUSTIC LOUVRE MODULES (CALM)

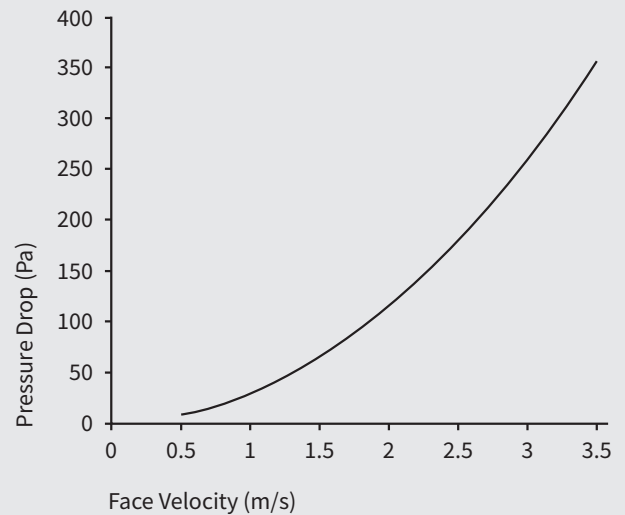
CALM S18-300-V

PERFORMANCE

Acoustic Performance

OCTAVE BAND FREQUENCY (Hz)	SOUND REDUCTION INDEX (dB)
125	6.9
250	12.2
500	18.1
1000	26.1
2000	29.1
4000	28.5

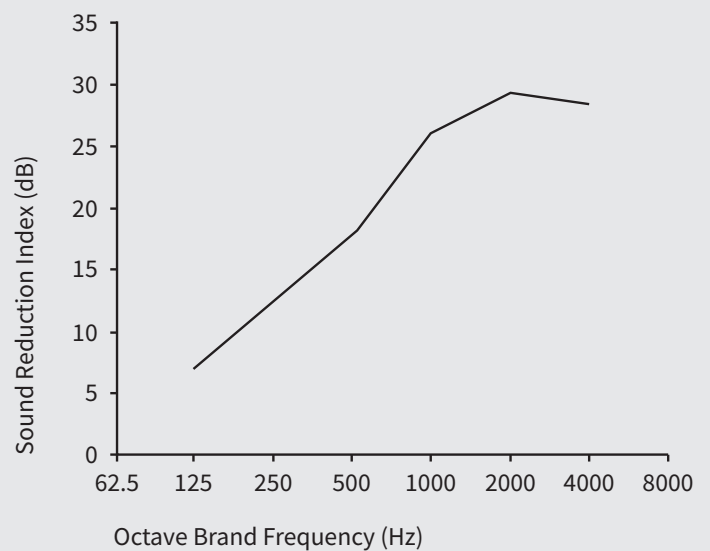
Rw (C, Ctr): 23 (-2, -5)



Aerodynamic Performance

FACE VELOCITY (m/s)	PRESSURE DROP (Pa)
0.0	0
0.5	7
1.0	29
1.5	65
2.0	116
2.5	181
3.0	260
3.5	354

Cv: 0.144 (K=48.23)



Colt International Ltd, Colt House, Ridgeway Office Park, Bedford Road, Petersfield GU32 3QF
Telephone: 02392 491210 | E-Mail: louvre@uk.coltgroup.com | Web: <https://www.colt.info/gb/en>

V1.2 Sept 2025

We take every care to ensure the information in this document is accurate at the time of publication. However, specifications may change without notice due to product development, manufacturing variations, or environmental conditions. All images are for illustrative purposes only and should not be considered binding. The information provided is given in good faith and applies to the uses described. It is the responsibility of the user to verify that the product is suitable for the intended application and complies with all relevant regulations and requirements. For advice on applications or conditions of use not specifically covered here, please contact our technical team. To ensure you are viewing the most up-to-date product information, please scan the QR code.

