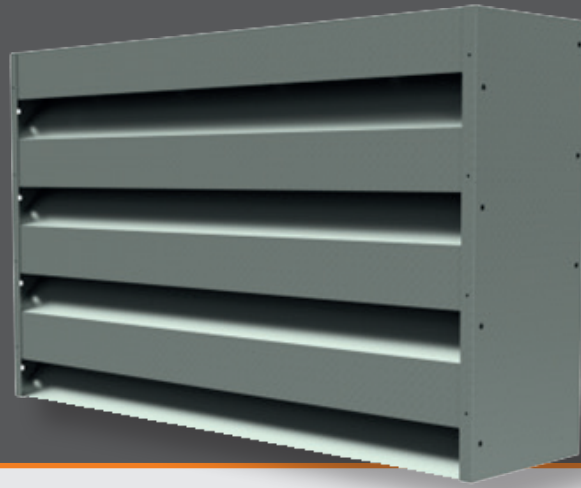




## PRODUCT DATASHEET

COLT ACOUSTIC LOUVRE MODULES (CALM)

# CALM S18-300



## Description of the product

The Colt CALM S18-300 acoustic louvre module provides an optimal balance between ventilation performance and noise attenuation, making it a versatile solution for a wide range of industrial and commercial applications where both airflow and acoustic control are required. Typical applications include plant rooms, substations, cooling towers, and other installations with demanding noise reduction needs while maintaining effective ventilation.

With a 300mm thick straight blade profile, the S18-300 delivers enhanced sound reduction – achieving a weighted sound reduction index of  $R_w (C, C_{tr})$  of 22 (-1, -5) as tested to BS EN ISO 10140-2:2021 – while maintaining excellent aerodynamic efficiency ( $C_v$  0.161). Its modular design allows for flexible system design, simple on-site installation, and seamless integration with other Colt systems, including Universal Louvre façades and ventilators.

Designed for durability, the S18-300 features robust galvanised steel construction and a variety of optional coatings to suit different environmental exposure levels.



## Materials Used in Manufacture

- Galvanised steel sheet (panel construction)
- Galvanised expanded mesh (rear face)
- Water-repellent and non-hygroscopic semi-rigid acoustic infill (to EN 13501-1)
- Polyester powder coating available to any RAL colour (optional)
- Marine-grade materials and coatings available for high corrosion environments (on request)

## Ancillaries Information

- **Vermin & Insect Screens:** Optional rear-mounted vermin screens are available in three configurations: bird guard, bird guard with insect mesh, or fly guard. Each is riveted to the back face of the module. (Note: the use of any screen option requires applying a  $C_v$  correction factor of 0.95.)
- **Integration with COLT Universal Louvre (UL):** Fully compatible with the UL system, offering additional weather protection and a wide range of aesthetic options.
- **Integration with Ventilators:** COLT ventilators can be installed behind the CALM modules to provide active airflow control where required.
- **Panel Joining Kits:** Enable the construction of larger assemblies without excessive support structures, simplifying installation and reducing costs.

## Product Features

300mm thick straight blade profile delivering a balance of high noise attenuation and effective ventilation

Tested to BS EN ISO 10140-2:2021 for certified acoustic performance

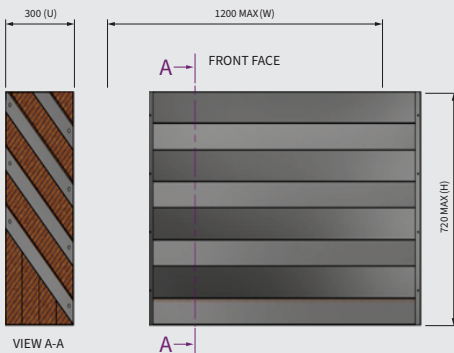
Modular design allows walls or runs to be built to any required width or height

Pre-punched fixing points for safe and easy two-person installation

Panel joining kits support longer spans, reducing the need for intermediate structural supports

Seamless integration with COLT Universal Louvre (UL) systems for added weather protection and visual consistency

Optional rear-mounted vermin, bird, insect, or fly screens for site-specific protection



## DATASHEET

COLT ACOUSTIC LOUVRE MODULES (CALM)

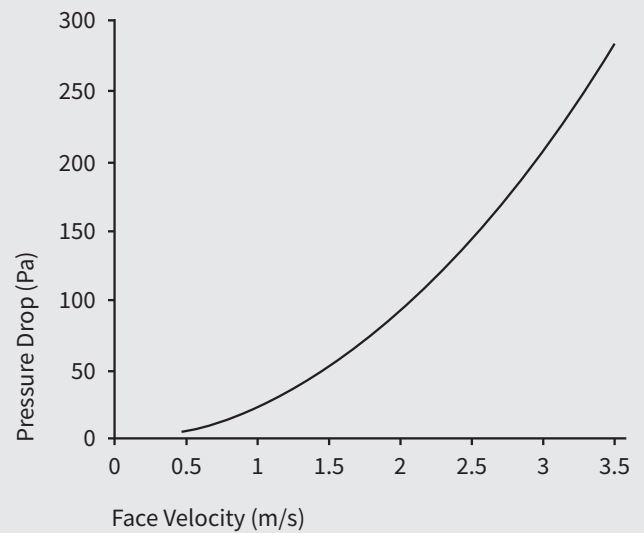
# CALM S18-300

## PERFORMANCE

### Acoustic Performance

OCTAVE BAND FREQUENCY (Hz)	SOUND REDUCTION INDEX (dB)
125	7.3
250	10.7
500	17.5
1000	29.0
2000	30.2
4000	24.4

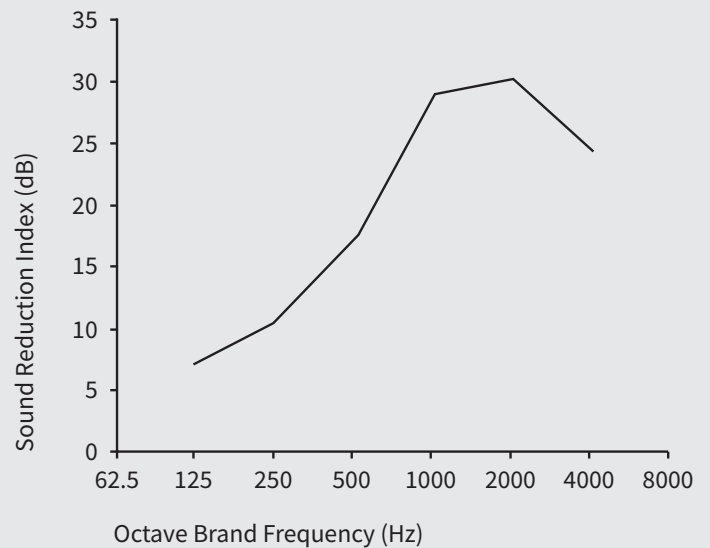
Rw (C, Ctr): 22 (-1, -5)



### Aerodynamic Performance

FACE VELOCITY (m/s)	PRESSURE DROP (Pa)
0.0	0
0.5	6
1.0	23
1.5	52
2.0	93
2.5	145
3.0	208
3.5	284

Cv: 0.161 (K=38.58)



Colt International Ltd, Colt House, Ridgeway Office Park, Bedford Road, Petersfield GU32 3QF  
Telephone: 02392 491210 | E-Mail: [louvre@uk.coltgroup.com](mailto:louvre@uk.coltgroup.com) | Web: <https://www.colt.info/gb/en>

V1.2 Sept 2025

We take every care to ensure the information in this document is accurate at the time of publication. However, specifications may change without notice due to product development, manufacturing variations, or environmental conditions. All images are for illustrative purposes only and should not be considered binding. The information provided is given in good faith and applies to the uses described. It is the responsibility of the user to verify that the product is suitable for the intended application and complies with all relevant regulations and requirements. For advice on applications or conditions of use not specifically covered here, please contact our technical team. To ensure you are viewing the most up-to-date product information, please scan the QR code.

