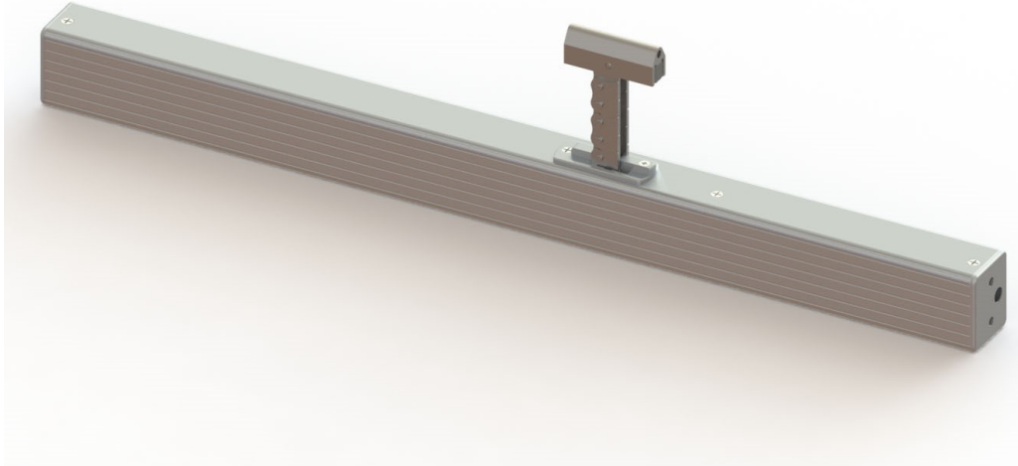
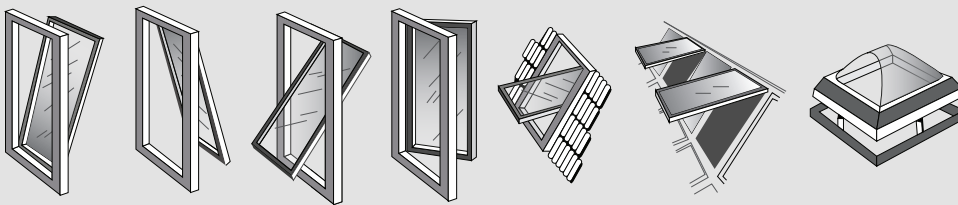


### CHAIN DRIVE ACTUATOR 400N AC230 V



STROKE: 100/200/300/400/500/600/700/800/900 /1000mm

### Applications:



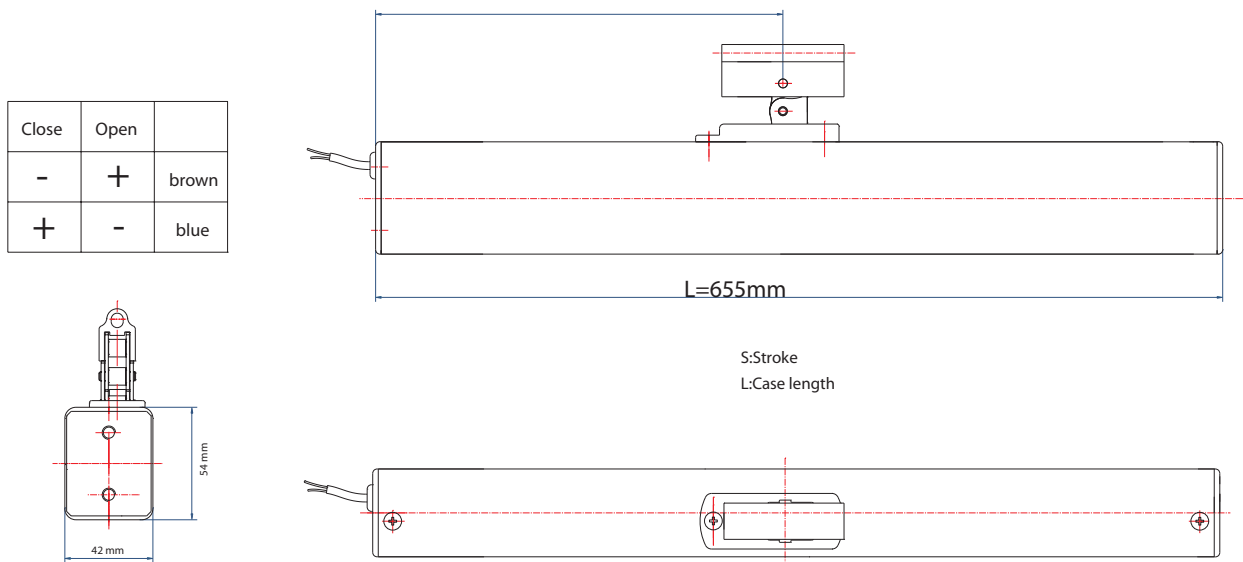
### Technical Feature :

- Flexible Stroke / Force / Speed Adjustment
- Double Link Chain / Stainless Steel Chain Is Available
- Electronic Overload Cutoff Protection
- Automatic Stop Protection For The Obstacle
- Synchronizing Moves When Joined Groups
- Flexible Mounting Brackets For Installation
- Low Noise Operation And Operate Smooth ,Stable
- Locking Force In Static Motion is 72,00N

Applications: smoke ventilation, tested in accordance to EN12101-2 part G



## Technical Drawing :



## Technical Data :

ACTUATOR	ENCO 400	
TYPE	Motorized	
ACTUATOR TYPE	Chain opening	
VOLTAGE (all $\pm 5\%$ )	AC 230V	
MAXIMUM OPERATING CURRENT	0.4A	
STROKE	560 mm	
OPERATING SPEED	12mm/sec	
AMBIENT OPERATING TEMP	$-20^{\circ}\text{C} \sim +60^{\circ}\text{C}$	
THRUST /PULL FORCE	400N	
PROTECTION DEGREE	IP 32	
PRODUCT LIFE	10,000 times	
BRACKET	Standard	

Standard finish is anodised aluminium, which can be powder coated from a range of standard RAL colours if required



COLT ENGINEERING SDN BHD

## Contact Us :

### Penang Head Office :

C-21-1, Persiaran Bayan Indah, Bayan Bay, Sungai Nibong, 11900 Penang

Tel: +604-644 8888

Fax: +604-644 3333

Email: [enquiries@coltfire.com](mailto:enquiries@coltfire.com)

### Kuala Lumpur Office :

B-G-19, Block B, Merchant Square Tropicana, No.1, Jalan Tropicana Selatan 1,  
47410 Petaling Jaya, Selangor

Tel: +603-7610 2030

Fax: +603-7887 9833

Email: [colt.kl@coltfire.com](mailto:colt.kl@coltfire.com)